

b.i.o

bpuntoio

ORGANIC WINE

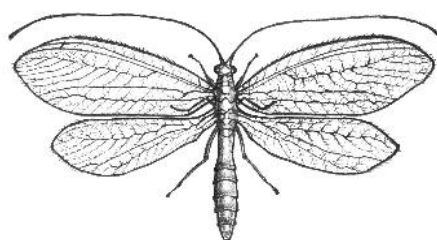


SICILIA

controlled origin denomination

NERO D'AVOLA

R O S A T O



GRAPES: Nero d'Avola

PRODUCTION ZONE: Inland southwestern vineyards of Sicily

CONTENTS: 0.750 lt.

ALCOHOL CONTENT: 12.50% Vol.

CHARACTERISTICS: Intense blush color. Aromas of rose, dried flowers, citrus, with soft notes of salinity.

Fresh taste of ripe red fruit, orange zest and a long mineral finish.

SERVING SUGGESTION: Goes well with fish soups, fresh cheeses, grilled vegetables and fish courses.

SERVING TEMPERATURE: 10-12°C